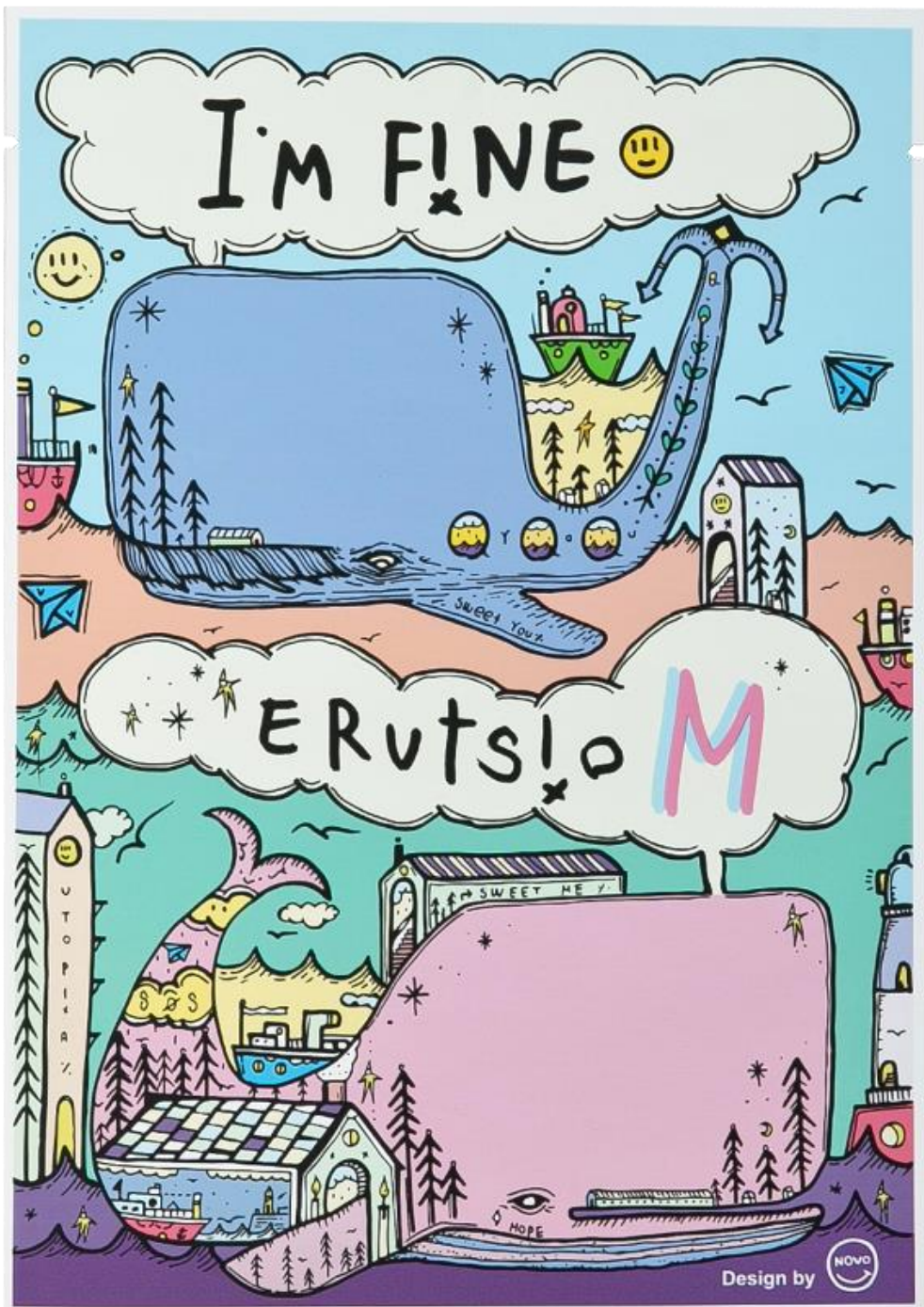


I'M FINE 😊

MASK PACK



I'M FINE MOISURE MASK PACK

As a meeting of Multi-Essence containing patented ingredients 'Multi-melamine liposome (Nano) MultiEx BSASM' and sea mucin + collagen + hyaluronic acid essence sheet, a moisturizing mask gives deeper moisture to the skin.



More clear, lively, tender, new skin is given today!

The differentiation of the pack which is simply soaking the essence on the sheet!

The essence of the mask sheet and the multi-Essence of I'm Fine combine to naturally react!

Private mask sheet of Cheongdam Ijiam !

The full nutritional feeling appears first as a formulation and does not dry for a long time

A powerful double essence effect from the skin to the moment of taking off

- ✓ Multi-essence essence sheet meet, more powerful double effect!
- ✓ Applying two essences to skin and helping deliver effective ingredients
- ✓ The essence ingredient of the mask sheet does not dry, it gives long lasting moisturizing feeling.

I'm FINE 😊

MASK PACK

what's different?

#01. PACKAGE DESIGN ; ARTIST Novo

The icon of hope and freedom, Visual artist Novo

Novo writer's signature whale drawing, meet through with I'm Fine mask pack



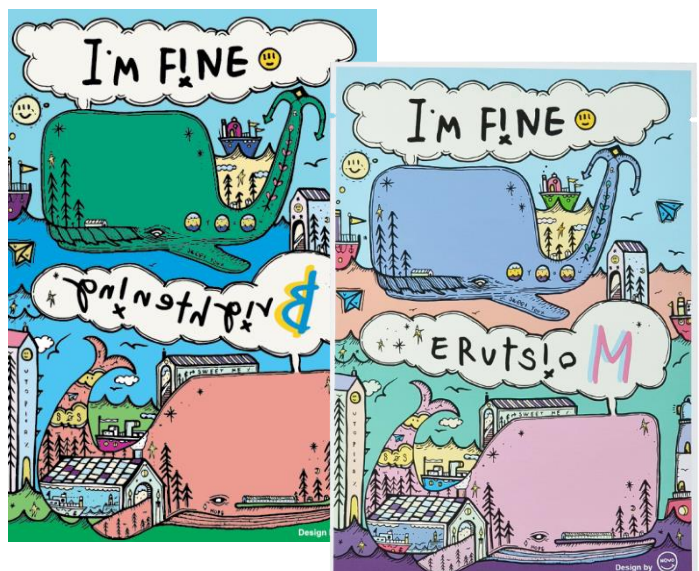
Visual Artist
Novo said

Through the whale swimming freely in the sky and the sea, I expressed the feeling of moisture and brightness. I hope that modern people who are weary will be able to go back to their homes and have bright faces while meeting whales.



Novo is a visual artist who covers various genres with his own creative drawings!

Novo, who collaborated with several brands including Nike and Kiel, worked with I'm Fine.



#02. 3step



01



I'm Fine's unique multi-lamellar liposome (nano) particles fit your skin!
 Patent ingredient 'MultiEx BSASM' & Panthenol & Allantoin
 Multi Essence
 Nano-sized to increase penetration, skin soothing & nutrition
 moisturizing

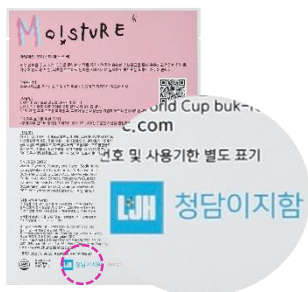
02



Sea Mucin + Collagen + Hyaluronic Acid Triple Essence Sheet Multi-Essence Sheet

Sea Mucin + Collagen + Hyaluronic Acid Triple Essence Sheet
 Containing sea mucin + Collagen + Hyaluronic acid which are similar
 with skin
 Meet with multi-essence, double effect!

03



Cheongdam Ijham Aftercare Multi-Essence Sheet

it's been used as a cheongdam skin care during 24 years.
 I'm Fine multi-essence sheet with a high level of satisfaction from skin specialists

#03. A special feature of multi-essence that is unparalleled

General ingredient extraction method



Raw material



general ingredient extraction (heat / pressure / oxidation):
destruction of effective ingredient



destruction of active ingredient

I'm FINE 😊

This is called RSM method

GOOD!



Raw material



/ I'm Fine ingredient extraction (RSM method):
Preserving effective ingredients



optimum active ingredient!

- ✓ This is called RSM method
- ✓ In the process of extracting the raw ingredients, eliminating the stress in the manufacturing process, so that the best efficacy can be obtained without destroying the ingredients.

Common Ingredients



RSM method

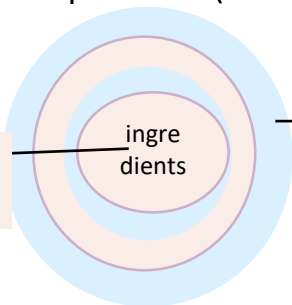
Skin

Extracted ingredients without sizing go directly to the skin
If the particles are large, the skin absorption rate falls!

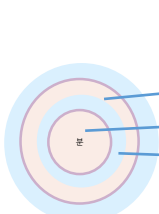
I'm FINE 😊

Multi-layered multi-lamellar structure
+ Liposomes (nanoparticles)

Receptive layer of core active ingredients multiple layer



oil layer similar to multiple layer skin lipids



Multi-melamine liposome active ingredients

Skin

Multi-layered multi-lamellar structure
+ Liposomes (nanoparticles)
Stabilize your skin

- ✓ Deliver components of multi-lamellar structure to skin by liposomation
- Stability is enhanced and skin transfer ability is amazing!
- Delivering a good active ingredient to the skin!
-

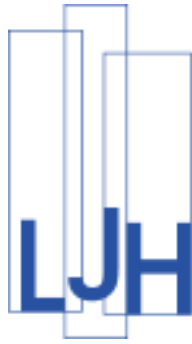
#04. The sheets are different!

The special essence Sheet of I'm Fine Mask Pack



- ✓ With excellent skin adhesion Same as cheongdam Ijiam Super close mask sheet
- ✓ The special essence Sheet of I'm Fine Mask Pack

#05. 24years, Cheongdam Ijham's skin care mask



It is a mask pack that is used for skin care in the Korean Medi-Institution cheongdam Ijham

Main ingredients of product



MultiEx BSASM Plus TM

- ✓ Includes green tea, cinnabar, licorice, chamomile, vinegar, rosemary, and golden
- ✓ Ingredients effective in relieving skin irritation and reducing water loss

Panthenol



- * Stimulate sensitive skin and strengthen skin barrier
- * Activate skin moisture and moisturizing function
- * Strengthens skin barrier and prevents moisture evaporation

Allantoin



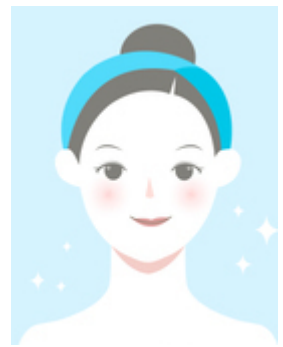
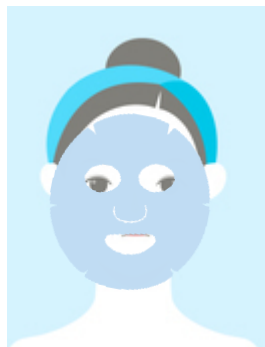
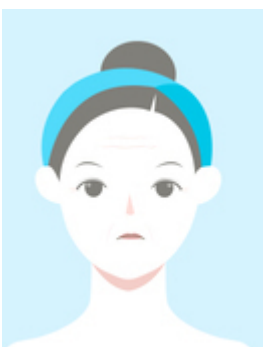
- * Soothes sensitive skin
- * Helps make skin soft and healthy
- * Helps promote skin cell regeneration without stimulation
- * Ingredients without irritation when using oily and sensitive skin

Skin recommendation



- * Rubbing and rough skin due to lack of water
- * Skin that needs tenderness and moisture

How to use the product



1. After cleansing, make face clean with skins.
2. Put the mask sheet evenly on the entire face.
3. After 15-20 minutes, remove the mask,
Tap lightly for absorbing the remaining contents on the skin

☒ It is recommended to use 2 to 3 times a week for 4 weeks.

1. Water
- 2 Glycerin
- 3 Dipropylene Glycol
- 4 Methylpropanediol
- 5 1,2-Hexanediol
- 6 Hydroxyethylcellulose
- 7 Caprylyl Glycol
- 8 Chlorphenesin
- 9 PEG-60 Hydrogenated Castor Oil
- 10 Trehalose
- 11 Arginine
- 12 Carbomer
- 13 Allantoin
- 14 Disodium EDTA
- 15 Fragrance
- 16 Sodium Hyaluronate
- 17 Dipotassium Glycyrrhizate
- 18 Panthenol
- 19 Butylene Glycol
- 20 Glyceryl Acrylate/Acrylic Acid Copolymer
- 21 Propylene Glycol
- 22 PVM/MA Copolymer
- 23 Centella Asiatica Extract
- 24 Polygonum Cuspidatum Root Extract
- 25 Scutellaria Baicalensis Root Extract
- 26 Camellia Sinensis Leaf Extract
- 27 Glycyrrhiza Glabra (Licorice) Root Extract
- 28 Rosmarinus Officinalis (Rosemary) Leaf Extract
- 29 Chamomilla Recutita (Matricaria) Flower Extract